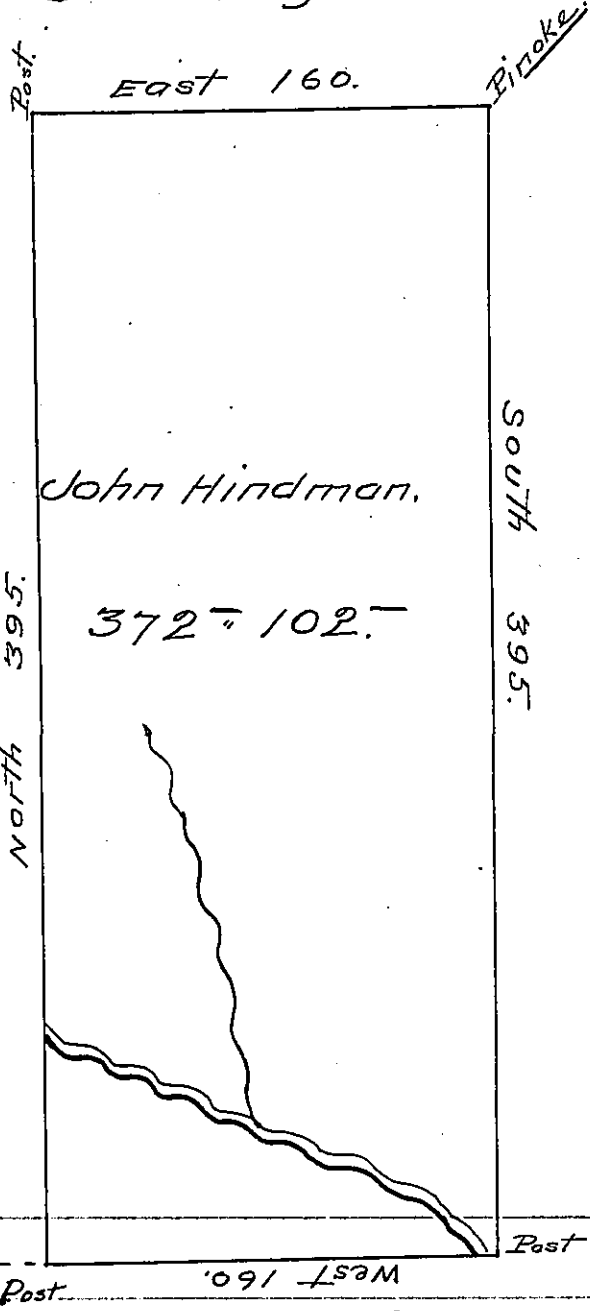


C 231-240

John Shryock.



C-141-5-7

Robert Hindman.

John Hindman.

372-102-

South 395.

Joseph Smith.

C 204-181

---Stripe line.

George Embrick.

Draft of a tract of land situate in Parker town-
 ship ^{County} Butler containing three hundred seventy two
 acres one hundred and two perches and allowance
 Surveyd on the 24th of Oct 1827 for John Hindman
 by virtue of his improvement actual settlement
 and residence

Hugh Conway D.S.

Gab^L. Hiester Esq^r S.G.

IN TESTIMONY that the above is a copy of the original remaining on file in
 the Department of Internal Affairs of Pennsylvania, made
 conformably to an Act of Assembly approved the 16th day of
 February, 1833, I have hereunto set my Hand and caused
 the Seal of said Department to be affixed at Harrisburg,
 this sixteenth day of March 1905.

James P. [Signature]
 Secretary of Internal Affairs.